



Rayoscan[®] Human

RAYONEX
BIOMEDICAL
Medical device
class IIa
**MADE IN
GERMANY**



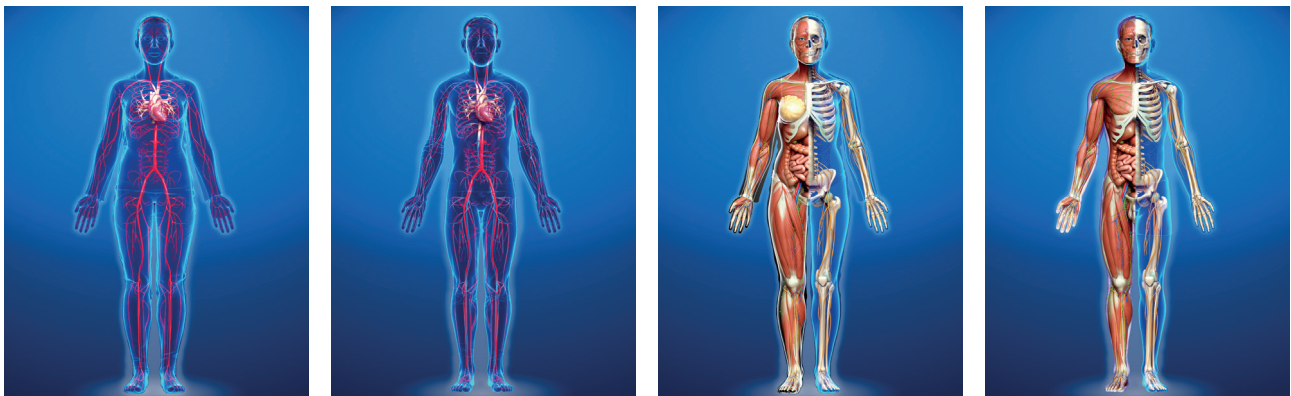
The Rayoscan® for the human field is the high-end software module of the Rayocomp PS 1000 polar 4.0. Through a fully automatic, energetic test based on ECG analysis, the therapist is provided with a fully comprehensive, cause-oriented therapy proposal as a result.



Afterwards the frequency spectra of 22 physiological areas are applied to the body. The integrated ECG analysis determines in the biofeedback procedure the most important physiological area from an energetic point of view in approx. 2 minutes.

For the suggested or from the therapist selected physiological area, the appropriate detailed programs are then also determined fully automatically using the biofeedback procedure. The detail test takes about 15 minutes. The result is the fully comprehensive, cause-oriented therapy proposal as described above, which can be treated with Rayocomp PS 1000 polar 4.0 itself or a Rayocomp PS 10 basic in home therapy. The software module also offers the possibility of showing the therapy progress by means of a progress control.

Thus, from a medical point of view, the Rayoscan® for the human field is not a diagnostic software but supports the therapist in the development of an individual therapy plan for an energetic treatment by the devices of Rayonex Biomedical GmbH.

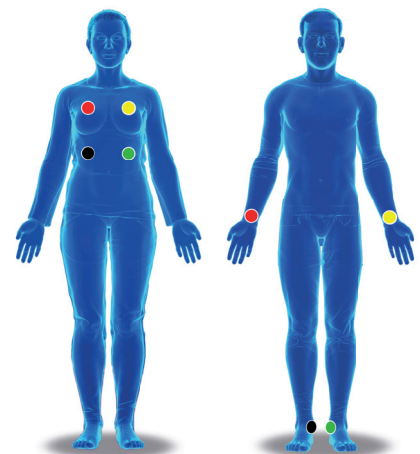


Connection with the Rayocomp PS 1000 polar 4.0 for RAH-Scan measurement

Connection of the Rayoscan® pads

The following image shows how the Rayoscan® pads should be connected to the four coloured electrode terminals. Please place the four Rayoscan® pads to the upper body of the client according to the illustrated colour scheme and then connect the four coloured electrodes.

Alternatively, the Rayoscan® pads can be placed on the inside of the wrists and ankles. According to the instructions the green and yellow cable are positioned on the left inside of the wrist or ankle and the red and black cable on the right inside of the wrist or ankle.



Unbeatable advantages

- ✓ The operation can be learned extremely quick in a few hours.
- ✓ The performance of an ECG-based application is known and familiar to both the therapist and the client.
- ✓ If the determined therapy programs are saved on a Green Card, home therapy can be carried out with a Rayocomp PS 10 basic - a blessing especially for elderly people.
- ✓ By means of the integrated progress control, the already achieved therapy progress can be shown to the therapist and his client.
- ✓ The new Rayoscan® Human can also be used for the range value test (the well-known energetic fingerprint).
- ✓ The Rayoscan® software is not a third-party development but was developed in Rayonex' s own laboratories and will continue to be developed there in the future.

BaPS-Scan and RAH-Scan

Both the individual range value testing (BaPS-Scan) and the proven in practice RAH-Scan can be carried out automatically with the new technology.

For the first time in the development history of Bioresonance according to Paul Schmidt it is possible to use the RAH-Scan in a check-up to evaluate the organism energetically in 22 physiologies of the most important organ systems and to determine the physiological area that is particularly in need of treatment from an energetic point of view.

Following the selection of the physiology area, a cause-oriented detailed test is automatically carried out in which burdens from the area of e.g. heavy metals, bacteria, viruses, but also e-smog, environmental toxins and pollutants are individually energetically assessed.

At the end of the detailed test, a therapy program is automatically generated that corresponds to the classic, successful structure of the RAH therapy programs. Of course, the therapist can make individual therapy supplements.

Progress controll

The integration of a Progress controll, for example, can show the course of therapy impressively every week. For this purpose, the last therapy program on the client is again evaluated energetically and program modules that were energetically balanced are omitted. For the remaining programs that still require treatment, a new therapy proposal for a subsequent therapy is offered directly.



Your benefits at a glance:

- ✓ The operation can be learned extremely quick in a few hours.
- ✓ The performance of an ECG-based application is known and familiar to both the therapist and the client.
- ✓ If the determined therapy programs are saved on a Green Card, home therapy can be carried out with a Rayocomp PS 10 basic - a blessing especially for elderly people.
- ✓ By means of the integrated progress control, the already achieved therapy progress can be shown to the therapist and his client.
- ✓ The new Rayoscan® Human can also be used for the range value test (the well-known energetic fingerprint).
- ✓ The Rayoscan® software is not a third-party development but was developed in Rayonex' s own laboratories and will continue to be developed there in the future.
- ✓ Further developments of the module can easily be imported via internet update.
- ✓ Future updates of the module can be downloaded free of charge on the Rayocomp PS 1000 polar 4.0.
- ✓ The therapy programs determined by the Rayoscan® can be archived and emailed without paper, e.g. by pdf.



RAYONEX Biomedical GmbH

Sauerland-Pyramiden 1 | 57368 Lennestadt
Telefon +49 2721 6006-0 | Fax +49 2721 6006-66
info@rayonex.de | www.rayonex.de

© Art.-Nr.: 91006EN | Rev000 | Stand: 11. November 2021